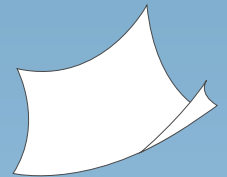


# Bringing ease to your electronic document management and workflow.

---

Make document management simple through our one-click philosophy.



# The secret of our success is making every clinician's life **easier**.

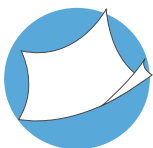
Over 200,000 healthcare professionals rely on the Docman platform every day to manage and workflow their clinical and non-clinical documentation.

Docman EDM, simply put, is an electronic filing cabinet that allows you to store, track, workflow and report-on all types of documents including forms, handwritten notes and test results in a standardised format.

Customisable  
to the way you  
work

Fully  
auditable

Easy access  
to reports



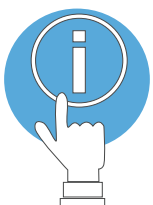
**Quickly capture documents** by letting Docman EDM read patient and filing information, reducing administration times.



**One-click philosophy** to be intuitive and easy to use, supporting organisations to meet targets through improved and consistent timescales.



**Standardise** the governance of the movement of paper in and around an organisation in a secure and audited way.



**Instant access** to the information you need, when you need it.

“

I love Docman as it reduces the risk of losing sensitive paper information whilst making key data available to those that need it! ”

Adam Tuckett, Lead Consultant, NHS South West Commissioning Support

### **Working the way you do**

Docman EDM and workflow can be customised to the way you and your clinicians work.

### **Ease of management reporting**

Quickly report on the time taken to process workflows, when a letter was received and when the workflow was completed on easy to read dashboards.

### **Track documents at your fingertips**

Know exactly where a document is in the process, when it was received and when the workflow was completed. The solution ensures you have complete confidence of where every letter is so there are no lost letters.

### **Supports you to meet targets**

Docman EDM supports Trusts in reducing the time taken from receipt of referral to appointment booking, helping Trusts to meet treatment time targets and avoiding costly fines.

**150,000**  
clinicians use  
Docman EDM

You take care of the patients.  
We'll take care of the documents.



“By going electronic we have complete visibility of our documentation. The project will provide a clear indication of the number of documents sent across our health economy and provide access to exactly where a letter is in the system.”

Laurelle Morgan-Bruce, Programme Manager, Oxleas NHS Foundation Trust

“When a patient is first referred to us, Docman allows us to ensure patients are booked into the right clinic without paper letters or faxes. It also gives us a full audit trail so that when patients ring the hospital we know where the referral is in the pathway. Previously, that would have meant hunting through piles of letters on desks.”

Colin Sweeney, King's College Hospital

“Everyone benefits from the use of this system - not only does it save time and money, but it also delivers direct clinical benefits.”

Dr J Reed, Birmingham and Solihull Mental Health NHS Foundation Trust

120

NHS trusts

6,000

GP practices

docman

delivering paper free care

200,000

NHS staff

37,000,000

patients registered

**Our passion is electronic document management.**

We provide one-click, easy to use electronic document management software to support busy NHS organisations.

Built on a one-click philosophy, our software is designed to be completely user-friendly so you can focus your time on patient care.

**Arrange a demonstration**



01977 66 44 96



[www.docman.com](http://www.docman.com)



[sales@docman.com](mailto:sales@docman.com)